



"Firefighter Brian Librino & Ladies Fire Auxiliary VP Kristen Librino putting up Holiday Decorations".



"Holiday decorations downtown".



"Fire Dept. Mascot Timber Librino in foreground taking a break".

### **DOWNTOWN REDEVELOPMENT PROJECT**

Mayor Zeller is appointing members at the Reorganization Meeting on January 3, 2005 at 7:00 PM, to serve on his Ad Hoc Committee for the ***Downtown Redevelopment Project***. The Mayor is planning to appoint two residents to this important committee. If you are interested in serving, please respond by submitting a letter to the attention of Mayor Zeller by December 27, 2004. Of those responding, two will be selected.

The Committee will be made up of two Planning Board Members, two Council Members, two local downtown business owners, two residents at large, one Zoning Board Member, one Historic Preservation Committee Member, the Planning Board Attorney and the Borough Planner.

# Montvale Fire Department



## SANTA ARRIVES IN MONTVALE

SANTA WILL ARRIVE IN MONTVALE ON CHRISTMAS EVE. EVERYONE IS INVITED TO WELCOME HIM. SANTA WILL ARRIVE IN THE CENTER OF TOWN VIA FIRETRUCK PARADING DOWN KINDERKAMACK RD TO THE PARK AT 6:00 PM DELIVERING GIFTS TO ALL GOOD LITTLE BOYS AND GIRLS.

HOPE TO SEE YOU THERE!

## NEW MEMBERS

THE FIRE DEPARTMENT WOULD LIKE TO WELCOME NEW JUNIOR MEMBER MICHAEL CINTINEO AND REGULAR MEMBER JOSEPH KOLESAR.

## WE NEED VOLUNTEERS

THE FIRE DEPARTMENT IS AN ALL VOLUNTEER DEPARTMENT CONSISTING OF OVER 35 MALE AND FEMALE RESIDENTS AND EMPLOYEES WITHIN THE BOROUGH OF MONTVALE. ANY RESIDENT THAT WOULD LIKE TO JOIN OUR DEDICATED TEAM, COME DOWN ON ANY TUESDAY EVENING AT 8:00 PM. WE WOULD BE HAPPY TO SPEAK TO YOU ABOUT BECOMING A VOLUNTEER. STUDENTS CAN JOIN OUR JUNIOR PROGRAM AT AGE 16 AND FULL MEMBERSHIP FOR ANYONE 18 YEARS OLD AND OVER.

## ANNUAL FUND DRIVE

THE FUND DRIVE IS STILL UNDERWAY. IF YOU HAVE MADE A DONATION WE THANK YOU. IF YOU WISH TO CONTRIBUTE, PLEASE MAIL YOUR DONATION TO: THE MONTVALE FIRE DEPARTMENT, PO BOX 206, MONTVALE, NJ 07645.

## FIRE SAFETY

FIRE HYDRANT'S ARE NOT ALWAYS VISIBLE WHEN SNOW IS PILED HIGH. IT IS EXTREMELY IMPORTANT THAT HYDRANTS REMAIN ACCESSIBLE THROUGHOUT THE YEAR. KEEP THE HYDRANT ON YOUR PROPERTY CLEAR OF SNOW AND ICE. IN THE EVENT OF AN EMERGENCY, WE WILL ALL BE THANKFUL YOU DID.

## FIREPLACE / WOODSTOVE

### MAINTENANCE

WHEN USING YOUR FIREPLACE OR WOODSTOVE BE CERTAIN THE FLUE IS OPEN BEFORE LIGHTING. BURN ONLY WELL SEASONED WOOD TO AVOID CREOSOTE BUILD-UP. IT'S A GOOD IDEA TO HAVE YOUR FLUE INSPECTED AND CLEANED EVERY YEAR. DON'T USE ANY FIREPLACE WITHOUT A SCREEN AND NEVER LEAVE A FIRE UNATTENDED.

## HOLIDAY DECORATIONS

MAKE SURE ALL HOLIDAY DECORATIONS ARE FIRE-PROOF AND ALL LIGHTS AND WIRING ARE UL APPROVED. IF YOU HAVE A CUT TREE IN YOUR HOME, KEEP IT FULLY WATERED AT ALL TIMES. TO MAINTAIN ITS FRESHNESS, DO NOT PLACE IT CLOSE TO A HEATING SOURCE.

## SMOKE DETECTORS

IF YOU HAVEN'T CHANGED YOU'RE BATTERIES DURING OCTOBER'S FIRE PREVENTION WEEK, DO SO NOW!

## SPACE HEATERS

SPACE HEATERS NEED SPACE. DO NOT PLACE ANY THING COMBUSTABLE WITHIN THREE FEET OF ANY SPACE HEATER. TURN OFF ANY SPACE HEATER WHEN NOT IN THE ROOM. DO NOT LEAVE SPACE HEATERS UNATTENDED.

**THE MONTVALE FIRE DEPARTMENT EXTENDS BEST WISHES FOR A SAFE AND HEALTHY HOLIDAY SEASON.**



## Recreation Department News

The Recreation Department news and information can also be found in the Borough Hall at the front counter and on the town website: [www.montvale.org](http://www.montvale.org)



### HALLOWEEN RE-CAP

Once again the Halloween Carnival was big hit. We hope you all enjoyed the games, the haunted house and all the food and candy. We are already looking forward to next year's event. Lastly, a very sincere THANK YOU goes out to all the young students who designed, built and ran all of the carnival booths for the evening.

### RADIO CITY MUSIC HALL HOLIDAY SHOW

We are going back! This year the Recreation Department will sponsor a trip to Radio City Music Hall for their annual Christmas show. Tickets may still available at the Borough Hall during normal working hours. **The date of the show is Thursday, December 9, 2004 at 8:00 PM. The cost for the show and bus transportation is \$65 per ticket.** Tickets are limited and are sold on a first come, first served basis. Bus transportation will pick-up (approximately 5:15 PM) and drop-off at the Borough Hall on Mercedes Drive. Children must be accompanied by an adult.



## MONTVALE'S HOLIDAY GIFT GIVING NIGHT

**Monday, December 6, 2004** will be the Borough's second annual **Holiday Gift Giving Night** in the center of Town. **In cooperation with the Borough's Public Assistance Director, the Recreation Department is collecting monetary donations, in the name of the Tri-Boro Family Care Fund, and local supermarket gift certificates to be donated to resident families who are having difficulty meeting their financial needs.** *In this time of celebration please take a moment to help those less fortunate.* Come join the Holiday festivities with Montvale's School Choirs. Ring in the spirit and recognize the fine work the Montvale Volunteer Fire Department has done decorating our town. Festivities will begin at approximately 7:00 PM. Free Hot Cocoa and candy canes will be given to those in attendance.

**THE RECREATION DEPARTMENT WOULD LIKE TO TAKE THIS OPPORTUNITY TO EXTEND HAPPY HOLIDAY WISHES TO ALL THE RESIDENTS OF MONTVALE.**



### BIDDY BASKETBALL

This program is an introduction to basketball for boys and girls in grades 1 and 2. This program is designed to be more instructional than competitive. Smaller basketballs and lower baskets are used. Mr. LoPresti, Physical Education teacher and Fieldstone Middle School Girls basketball coach, Mr. Jasper, elementary school teacher and former Pascack Valley H.S. basketball coach, and Stan Freeman, former elementary school teacher/principal and Westwood High School basketball coach will be running this program on Saturday mornings in the Memorial School Gym. **The program begins December 4, 2004. The fee for this program is \$35.**

The schedule for Dec. 4th will be as follows:

Gr. 1- Registration - 9:45-10:00 AM

Play - 10:00-11:00 AM

Gr. 2- Registration - 10:45 -11:00 AM

Play - 11:00 AM-Noon

Depending upon the amount of people that register on Dec. 4th, each grade level may be divided into two sessions.

Gr. 1- 1st session: 10:00-10:40 AM /

2nd session: 10:45-11:25 AM

Gr. 2- 1st session: 11:30-12:10 PM /

2nd session: 12:15-12:50 PM



### HATHA YOGA

Learn the basics of Hatha Yoga with resident Rose Freeman. Yoga gradually increases flexibility, physical strength while increasing energy. Yoga will also improve concentration, emotional stability and the ability to relieve stress through relaxation.

This extremely popular class is being offered for two sessions. **The first class will meet once a week on Monday evenings from 7:00-8:00PM** in the Fieldstone Middle School Cafetorium beginning **January 3, 2005**. **The second class will be held once a week on Wednesday mornings from 10:15-11:15AM in the old Borough Library on Grand Ave., beginning January 5, 2005.**

Registration will take place on the first class of each session. Residents and non-residents 18 years of age or older are invited to participate. High School students may participate in this program if accompanied by an adult. A mat or towel should be brought to each class.

The fee for each yoga session, which consists of 8 classes each, is \$40 for residents and \$60 for non-residents.



The instructor for this class is Rose Freeman. Rose has a Bachelor's Degree in Corporate Fitness and is a certified Personal Trainer, Yoga, and Pilates Instructor. For further information contact Rose @ 201-802-1043.

### YOGALATES

This program combines the principles of Hatha Yoga and Pilates. Yogalates is a method of body conditioning through stretching and strengthening. This method of fitness strengthens and tones muscle, improves posture, provides flexibility and balance and will help connect the mind and body.

This eight week program will be offered on **Thursday evenings from 8:00 PM to 9:00 PM in the Fieldstone Middle School Cafetorium**. Registration and the first class will take place on **Thursday, January 6, 2005**.

This eight week program is for men and woman 18 years of age and older. High School students may participate in this program if accompanied by an adult. A mat or towel should be brought to each class. The fee for this class is \$40 for residents and \$60 for non-residents.

The instructor for this class is Rose Freeman. Rose has a Bachelor's Degree in Corporate Fitness and is a certified Personal Trainer, Pilates and Yoga Instructor. For further information contact Rose @ 201- 802-1043.

### PILATES BALL AND BAND

Tone and condition the body while developing correct breathing, better posture, and mental concentration and focus. This class includes lower body ball activities and upper body resistance tubing. Beginners to advanced participants are wel-

come. The first class will be held from **9:15 to 10:15 AM at the old Public Library**. The **Wednesday morning** class will begin **January 5, 2004**. The **second class** will be held on **Thursday evenings** beginning **January 6, 2005**. This second class will be held in the Fieldstone Middle School Cafetorium from **7:00 to 8:00 PM**. The fee for this program is \$40 for residents and \$60 for non-residents. This eight week program is for men and woman 18 years of age and older. High School students may participate in this program if accompanied by and adult.

The instructor for this class is Rose Freeman. Rose has a Bachelor's Degree in Corporate Fitness and is a certified Personal Trainer, Pilates and Yoga Instructor. For further information contact Rose @ 201- 802-1043.

### **KICKBOXING**

This aerobic fitness and toning program is extremely popular and continues to grow in Montvale. This eight week program is for men and woman 18 years of age and older. High School students may participate in this program if accompanied by and adult. This class will be held on **Tuesday evenings from 7:00 PM to 8:00 PM in the Fieldstone Middle School Cafetorium**. Registration and the first class will take place on **Tuesday January 4, 2005**.

The fee for this 8 session program is \$40 for residents and \$60 for non-residents. . The instructor for this class is resident, certified kickboxing instructor, personal trainer and Registered Nurse Jamie Boman.



### **TOTAL TONE**

This body toning class will utilize exercise bands, exercise balls and weights to build strength, endurance and improve body composition. This eight week program is for men and woman 18 years of age and older. High School students may participate in this program if accompanied by and adult. This class will be held **Tuesday evenings from 8:00 PM to 9:00 PM in the Fieldstone Middle School cafetorium**. Registration and the first class will take place on **Tuesday, January 4, 2005**. The fee for this eight session program is \$40 for residents and \$60 for non-residents.

The instructor for this class is resident, certified kickboxing instructor, personal trainer and Registered Nurse Jamie Boman.

### **ADULT MAT PILATES CLASS**

This class strengthens the body core by combining eastern and western principles. The exercises developed by Joseph Pilates emphasize body alignment and controlled breathing. This Pilates class will help strengthen your back and abdominal muscles while improving your posture. Pilates can also reduce physical and mental stress, as well as improve your flexibility and coordination.

This program will be held on **Monday evenings from 8:00 PM - 9:00PM** in the Fieldstone Middle School Cafetorium and will begin **January 5, 2005**. The fee for this program is \$40 for residents and \$60 for non-residents. This eight week program is for men and woman 18 years of age and older. High School students may participate in this program if accompanied by and adult.

The instructor for this class is Rose Freeman. Rose has a Bachelor's Degree in Corporate Fitness and is a certified Personal Trainer, Pilates and Yoga Instructor. For further information contact Rose @ 201- 802-1043.

### **BODY CONDITIONING**

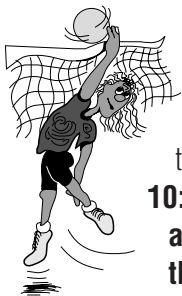
This body conditioning class is designed to work specific muscle groups to build strength, endurance and improve body composition. Interval training combined with weights will be used throughout the class. This eight week program is for men and woman 18 years of age and older. High School students may participate in this program if accompanied by and adult. This class will be held on **Wednesday evenings from 8:00 PM to 9:00 PM in the Fieldstone Middle School cafeto-**

**rium.** Registration and the first class will take place on **Wednesday, January 12, 2005.**

The fee for this 8 session program is \$40 for residents and \$60 for non-residents. The instructor for this class is resident Dawn Helfenbein. Dawn has been teaching fitness classes for approximately 14 years.

## GIRL'S DANCE

This new Recreation program is for girls in grades 3-8. This is an eight week instructional dance class that will focus on hip-hop dancing. The program will be offered in the "old" Borough Library on the second floor. The class will begin **Wednesday afternoon January 5, 2005 from 3:30-4:30 PM.** Registration will take place on the first day of class. The fee for this program is \$40 for residents and \$60 for non-residents (space permitting).



## ADULT VOLLEYBALL

This program is for men and women 18 years of age and older. Adult volleyball will be held in the Memorial School Gymnasium "B" from **8:00-10:00 PM.** The program begins **January 4, 2005 and will be held on Tuesday evenings through March 22, 2005.** The fee for Residents is \$40 and the Non-resident fee is \$60.

## GIRL'S VOLLEYBALL

This girl's volleyball program will begin **Thursday, January 6, 2005.** This eight week program will be offered to girls in grades 5-8. The girl's will learn and play in the **Memorial School Gym from 6:00 - 7:30 PM.** Registration will take place the first night of the program. The fee for this program is \$40 for residents and \$60 for non-residents.

## YOUTH CHESS CLUB

A youth chess class will be offered beginning in **January.** This program will offer instruction to children interested in learning the dynamics and strategies of chess. The class will run for six weeks. The club is open to children from K through eighth grade. First time and experienced chess players are welcome. Two different levels will be offered. The Rec. Dept. has some chess sets, however it is recommended that each child

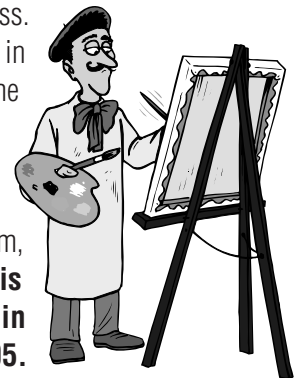
bring their own chess set to the class. Space will be limited. The fee for this class is \$25 for residents. Updated announcements will be available on the Borough web site or by calling 201-930-0646.

## ADULT CHESS

The Adult Chess program will meet in the Memorial Elementary School Library Wednesday evenings beginning **September 8, 2004 from 7:00 PM to 10:45 PM.** This program is open to novice and advanced players. Any one interested in playing may contact Steve Ohayon @ 201-391-4272.

## WATER COLOR PAINTING

This program is being offered to adults 18 years and older. Artist and Borough Resident, Carolyn McDonald, will be teaching this Water color paint class. Mrs. McDonald's work can be seen in the Montvale Public Library and the Borough Hall among other places. The class will teach the magic of color and how to get it to work for you. Other areas taught are realism, impressionism and abstract art. **This eight week class will begin Wednesday, January 19, 2005. The class will be held from 8:00-9:30 pm** in the Memorial School Art room. Registration is \$50 for residents and \$75 for non-residents. **Individuals must pre-register in the Borough Hall during normal working hours by January 12th.**



## SKI TRIP

The Recreation Department is sponsoring a ski trip to Thunder Ridge in Patterson, NY in February. The ski trip is for **resident families** to attend and enjoy. Children under 18 must be accompanied by an adult. Details including date, fees and packages will be determined in December. If you are interested in attending this trip please call Bill Greco at 201-573-8706. Registration for this first trip will take place in early January. **Information regarding the date of registration will be posted on the Borough web site as well as sent home through the Montvale schools. This information will also be available at Borough Hall.**

### WRESTLING

Montvale recreation wrestling is back. Pascack Hills' coach and Fieldstone Middle School Physical Education Teacher, Andrew Del Mauro will be instructing this Montvale Recreation program to Montvale and Woodcliff Lake residents. **Practices will be held at the Pascack Hills High School auxiliary gym on Tuesday and Thursday evenings from 6:30 PM - 8:00 PM.** The fee for this program is \$50 for residents and \$75 for non-residents. For more information please contact Coach Andrew Del Mauro @ 201-391-9000 ext.115.

### MEN'S 30 & OVER BASKETBALL

This program is held on **Monday evenings from 8:00-10:00 PM** in the Memorial School gymnasium. This pick-up game style program began **September 13, 2004 and will continue through April 2005.** The fee for this program is **\$30 for residents and \$50 for non-residents** if space permits.

### ADULT MEN'S COMPETITIVE BASKETBALL

Residents 18 years of age and older can participate in this competitive style pick-up game format. The program will begin on **January 5, 2005 and will continue through April.** Games are played on **Wednesday nights from 8:00-10:00 PM** in the Fieldstone School gymnasium. The fee for this program is **\$30 for residents and \$50 for non-residents** if space permits.

### ADULT WALKING PROGRAM

Adults interested in walking for fitness may do so in the **Memorial Elementary School between the hours of 7:00-8:00 am Monday through Friday when school is in session.** This is a great way to walk without the worry of the elements. Walk in the school corridors and look at the terrific school work displayed from Montvale's youth. There is no fee for this program.

Registration for this program can be done in Gymnasium "A". Forms and maps are hanging on the Physical Education office window.

Parking for this program is on Memorial Drive. The faculty

parking in front of the school is off limits. Please do not bring strollers into the school.

### FIELD USE

Residents should be aware that all field use must be approved by the Recreation Department. Application forms are available at the Borough Hall. Liability insurance is required and use is strictly subject to availability. For further information contact Field Coordinator: Tom Mascarelli @ 201-206-3414.

## **Bergen County Utilities Authority**

### FAT-FREE SEWERS CAN THE GREASE

Fats, Oils and Greases aren't just bad for your health; they're bad for sewers, too! The Bergen County Utilities Authority has initiated the Can the Grease Program to provide those in the service area the necessary tools to help combat the problem of grease in sewer lines. Many of us know that fats and grease are bad for us, but they are also bad for the sewer collection system. Ordinary cooking grease (lard, shortening, butter and margarine, bacon grease, etc.) has been identified as one of the leading causes of dry weather overflows. Too often, this grease is washed into the plumbing system, usually through the kitchen sink. Grease sticks to the insides of sewer pipes (both on your property and in the streets). Over time, the grease can build up and block the entire pipe.

Home garbage disposals do not keep grease out of the plumbing system. These units only shred solid material into smaller pieces and do not prevent grease from going down the drain.

There are several ways to solve the grease problem...1) Never pour grease down sink drains or into toilets; 2) Scrape grease & food scraps from trays, plates, pots, pans, utensils, grills & cooking surfaces into a can or the trash for disposal; 3) Do not put grease down garbage disposals. Put baskets/strainers in sink drains to catch food scraps and other solids and empty the drain baskets/strainers into the trash for disposal; 4) Speak with your friends and neighbors about the problem of grease in the sewer system & how to keep it out.

## From the Historian's Desk

by *Maria (Ree) Pratt Hopper*

The Paskack Junior Woman's Club has commissioned a coverlet honoring Montvale's historic past. (See order form elsewhere in this issue.) I thought it might be of interest to relate some of the history of the buildings depicted on the coverlet.

**The Octagon House** was built in the late 1850's by John J. Blauvelt, Jr. It was based on the design promulgated by Orson S. Fowler in his book, *a Home for All, or the Gravel Wall and Octagon Mode of Building*. Following his design the house features thick walls made of a mixture of gravel, straw, lime, sand, and rubble. A circular staircase, leads to the belvedere on the roof, which was said to be an aid to ventilation in the summer months. In 1883, after the death of John Blauvelt the house was inherited by his daughter Amelia, who with her husband, Garret F. Herring, our second mayor, and their family. He owned the nearby saw mill, and ice harvesting business, and was the railroad agent (reported flagging trains down from the belvedere). Like many Montvale residents the Herings took in summer boarders. Amelia owned the house until 1925, when it was sold to Fred and Wilhemina Huff. Over the years the building has served not only as a home for two other mayors George Huff and Jules Schwenker. It has also been used for various commercial establishments - a restaurant, real estate and insurance offices, a beauty parlor and currently a limousine service and florist. One of only two Octagon Houses in the county the house has been designated as a Montvale Historic Landmark and is feature on the Montvale Seal, designed by Carolyn MacDonald. Located at 13 West Grand Avenue.

**The Nicholas Holdrum - Van Houten House** was built by Nicholas Holdrum about the time of the Revolution. The date 1778 is said to have been cut into an attic beam. It was sold to James Van Houten in 1854, and remained in the Van Houten family for almost seventy years. It is one of three remaining Dutch Colonial Sandstone House in the Borough. It has been landmarked by the Borough of Montvale and is on the National and State Registers of Historic Sites. Located at 43 Spring Valley Road.

**School No. 2** derives its name from the original one room wooden school it replaced, on the same site. School No. 1 was

an identical one room school house located on the north side of Summit Ave., just west of Spring Valley Rd. where the children from "Upper Montvale" attended school from 1901-1931. The yellow brick school which replaced the old school No. 2, had four classrooms, two downstairs and two upstairs, opened in September 1909. In 1927 four more classrooms were added to the rear of the building, a basement auditorium and indoor plumbing as well. After Fieldstone was constructed in 1966 the building was closed as a school. In 1974 the borough leased the building and from October 20, 1975 until October 20, 2003 it served as the Montvale Public Library. Located on the corner of East Grand Avenue and Waverly Place.

**Eckerson House** In 1770 Jacob Eckerson and his brothers David and Thomas leased 397 acres on the Montvale/New York border. Jacob purchased 119 acres in of the tract in 1787, and probably built the current house about that time, though a house was mentioned there in the 1774 Ny-NJ boundary agreement. It was lived in the the Eckersons and their descendants until 1870. It was owned by several owners after that until 1917 when John Foxlee purchased the property. The Foxlees owned the house for over seventy years until his wife Ludnilla Kushar Foxlee died in 1971. The house is one of three remaining Dutch Colonial Sandstone House in the Borough. It has been landmarked by the Borough of Montvale and is on the National and State Registers of Historic Sites. Located 280 Chestnut Ridge Road.

**Old Stone Church** was the original St. Paul's Episcopal Church which was begun in 1894, with local farmers contributing stones from their fields. The land was donated by Montvale's first Mayor Jacob Ter Kuile and his wife Cora. The design was furnished by one of the most prominent architects in the country, Samuel Burrage Reed, a resident of Woodcliff Lake. The first services were held in 1895, and it remained the home of St. Paul's Congregation until the new church on the hill was built in 1958. It was sold by the congregation in 1963. It continues to used as a church by the current owners, The International Church, an Indian congregation. It has been designated as a Historic Landmark by the borough of Montvale. Located at 95 West Grand Ave, & corner of Woodland Road

**Hering's Mill** was built in the late 1800's it was a saw mill and in October it was used as a Cider Mill. It was owned by Garret F. Hering, our second mayor. The pond formed by the mill dam, know first as Hering's Pond and later as Huff's Pond, was used for swimming, skating, and the harvesting of ice. Formerly

located on the east side of the Pascack Brook, on the north side of West Grand Avenue, behind the restaurant now located there, across from the Post Office.

**Collignon's Garage & First Fire House** - Clarence and Clara Collignon rented their garage to the borough for thirty years from 1924-1954 for use as the Fire House. It still serves as a auto repair garage today. In the 1920's Santa began making his Christmas Eve visits to Montvale from this Fire House, and Santa being an old fashion guy still begins his journey into town at the First Fire House. Located on the corner of Kinderkamack Rd. and Pearl Ave.

**The Railroad Station** was built shortly after 1871 when the first railroad trains came through Montvale. The first two station masters were John Blauvelt and Garret F. Hering, both of whom lived in the nearby Octagon House. The original station, pictured on the coverlet, was burned down by an arsonist in the early hours of October 11, 1921. It was replaced by the current railroad station several years later. [See the September 2004 issue of the Borough Newsletter.]

**The General Store** was located next to the train station facing south on Grand Avenue. It was built by the Ackerman Brothers in the late 1800's. It was later know as Hillbig's General Store and later owned by Marie Bruns. It sold a wide variety of materials from feed and grain, to groceries, cloth, and household items. and cloth. Most memorable was the penny candy. It was purchased and torn down by the borough in the late 1960's to expand the north park.

**Dairy Queen** was built in 1958. It is unique among the many Dairy Queens in or nation, as it is the original building. It has not been altered or added on to since its construction, and the original sign is still on the roof. Many residents and former residents have fond memories of summer nights, spent at the DQ. Located on the corner of Summit Avenue and Chestnut Ridge Road.

For more information on these buildings see the Borough Web Site [www.montvale.org](http://www.montvale.org) "historic Landmarks" and "Centennial Journal."

**Note:** In the last Historian's article in the September Newsletter it stated "Montvale burned to the ground." - *A major exaggeration the printer covered the first line of the article with the photograph. It should have read, "About 1920 the railroad station in Montvale burned to the ground."*

## Rabies Clinic

The Borough of Montvale will hold its annual rabies clinic on January 8, 2005 at the Dept. of Public Works Garage, Memorial Drive. Dogs will be vaccinated from 10:00-10:45 A.M. and cats from 10:45-11:30 A.M. Dogs must be leashed and cats must be in carriers. This service is free for residents.

Animals receiving their first shot will need to be revaccinated the following year. After that, the NJ State Department of Heath recommends vaccination every two years.

Dogs and cats are required to have current rabies vaccination certificates in order to be licensed each year. For further information on rabies inoculations please call (201) 445-7217.

Those residents wishing to license their pets at this time may do so at the clinic. (Please see license renewal form enclosed in this Newsletter. The form can also be down loaded from the Borough web site, [Montvale.org](http://Montvale.org).) Residents, if you no longer own a pet, please notify the Borough Clerk's office. Licensing information is available at Borough Hall, (201) 391-5700.



## Pascack Junior Woman's Club

The GFWC Pascack Junior Woman's Club is pleased to inform you the Montvale Historical Blanket is available for the holidays. Blankets cost \$50 and can be obtained by sending a check payable to PJWC (memo-Montvale Blanket) to PO Box 489, Park Ridge, NJ 07656, or by calling Ann at 201-391-5389. A limited number of blankets are available, so get yours now - they are great gifts!!

PJWC is a volunteer organization comprised of women from the Pascack Valley Area and serves the towns of Hillsdale, Montvale, Park Ridge, RiverVale, and Woodcliff Lake. For more information about the Club, please visit the Club site [www.pascackvalleybiz.com/~pjwc/](http://www.pascackvalleybiz.com/~pjwc/)

## Montvale Senior Club



THE MONTVALE SENIOR CLUB WISHES YOU JOY THIS HOLIDAY SEASON! WE INVITE YOU TO VISIT US IF YOU ARE A MONTVALE RESIDENT AND AT LEAST 55 YEARS OF AGE. WE MEET THE FIRST AND THIRD THURSDAYS OF EACH MONTH AT THE PARK RIDGE ELKS CLUB ON SULAK LANE.

MONTVALE SENIORS CONTRIBUTE THEIR TIME AND TALENTS TO RUN OUR CLUB, CREATING GREAT ACTIVITIES AND GOOD FELLOWSHIP. DINNER DANCES ARE ENJOYED AT THE FLORENTINE GARDENS FOUR TIMES A YEAR, AND WE ENJOY OTHER SPECIAL LUNCHEONS AS WELL.

THE LATEST IN LINE DANCING IS ABLY INSTRUCTED BY LILLIAN CORCORAN AT OUR CLUB. LILLIAN ALSO ARRANGED FOR A THRILLING EUROPEAN BLUE DANUBE CRUISE RECENTLY, AND GEORGE RICE IS PLANNING A NEW YEARS EVE "SENIOR SPECIAL" AT THE TIDES. MONTVALE'S PBA HOSTS A THANKSGIVING LUNCHEON ANNUALLY FOR THE CLUB.

WE LOOK FORWARD TO MOVING INTO THE RENOVATED "MONTVALE SENIOR AND COMMUNITY CENTER" LATER IN 2005. DO CONSIDER BEING A PART OF OUR LIVELY FUN.

FOR MEMBERSHIP INFORMATION:

ATTENDANCE SECRETARY - DOTTI CROSS  
201-391-3904

PRESIDENT - BETTY RUTISHAUSER  
201-391-8933

## Health Department News

One of the Most commonly asked questions of local Health Departments is how to get rid of home use of medical syringes. In the State of New Jersey, syringes may be placed in a heavy plastic bottle – like a plastic liquid detergent or orange juice bottle – NO CARDBOARD CONTAINERS PLEASE; screw on the container lid tightly and tape it on the bottle with heavy duck tape and place in a heavy mil plastic bag for collection.

Glass bottles or clear plastic containers are NOT to be used for syringe disposal.

KEEP SYRINGE DISPOSAL CONTAINERS WELL OUT OF REACH OF CHILDREN.

Any blood soaked bandages, gloves, or disposal sheets can also be placed in a heavy mil plastic garbage bag for disposal. Plastic syringe disposal containers are NOT RECYCLABLE and must be placed in a heavy mil garbage bag with household garbage.

For further information, call the Northwest Bergen Regional Health Commission at 201-445-7217.

### Suggestions from your Dept. of Public Works

When blowing or shoveling the snow from your driveway always – pile the snow to the right side of the driveway (with your back facing your house) so that the pile of snow at the bottom will not be pushed back into your driveway by the snow-plows when they make their final pass on your street.

### Find that Hydrant!

Don't wait for someone else to dig out that Fire Hydrant near your home. Hopefully you'll never need it, but you'll feel better knowing where it is.

Use de-icing materials wisely – protect yourself and other's. Be sure to check your pet's paws where some of this material can get stuck and do injury to them.



**BOROUGH OF MONTVALE**  
 12 MERCEDES DRIVE  
 MONTVALE, N.J. 07845  
 (201) 391-5700

LICENSING OFFICIAL (NOT VALID UNLESS SIGNED)

N.J. ANIMAL LICENSE

DATE ISSUED

LICENSE NO.

|             |      |                  |                                     |  |                    |     |
|-------------|------|------------------|-------------------------------------|--|--------------------|-----|
| ANIMAL NAME |      |                  | BREED                               |  | AGE                | DOB |
| SEX         | HAIR | COLOR & MARKINGS | SPAYED/NEUTERED (Y/N) - IF YES DATE |  | SPAYED/NEUTERED BY |     |

OWNER

TELEPHONE

|     | DESCRIPTION              | SPAYED/NEUTERED | NON-SPAYED/NOT-NEUTERED |
|-----|--------------------------|-----------------|-------------------------|
| DOG | BOROUGH FEE              | \$ 5.00         | \$ 5.00                 |
|     | STATE FEES               | \$ 1.20         | \$ 4.20                 |
|     | TOTAL                    | \$ 7.00         | \$ 10.00                |
|     | LATE FEE AFTER FEB. 29th | \$ 5.00         | \$ 5.00                 |
| CAT | BOROUGH FEE              | \$ 7.00         | \$ 10.00                |
|     | LATE FEE AFTER FEB. 29th | \$ 5.00         | \$ 5.00                 |

MIL FORMS SYSTEMS 11006-01

THIS LICENSE EXPIRES JANUARY 31 AND MUST BE RENEWED IN JANUARY OF NEXT YEAR

RETURN ALL COPIES  
 INSTRUCTIONS ON REVERSE SIDE

## Library News

Beginning December 15, ALL libraries in the Bergen County Cooperative Library System will shift to new software for day-to-day operations. What you see in the web catalog won't change much, but EVERYTHING the library staff sees and does behind the circulation desk and in the workroom will change drastically. Montvale's Library Assistants have attended many one-on-one training sessions since early November. Glitches and unforeseen situations may arise, however, so please be patient.

Beginning December 31, 2004 and lasting for several weeks, we will be unable to renew items over the phone, as many of these items must be discharged on the old software and charged out on the new software. You will also be blocked from doing many online renewals for the same period of time. Unfortunately, this means that you must bring your items (and your library card, of course) to the Library in order to renew your materials. We hope--and we're sure you do, too--that this will be only a temporary situation, and we apologize for any inconvenience.

Winter Story Time registration (in person only, please) begins at 10:00a.m. on Monday, January 3, 2005. (Where did

2004 go, we wonder?) Also scheduled for January is the perennial favorite "Picnic in January," registration date to be announced.

The Adult Department offers "AnitaLaugh Improvisation and Sketch Comedy Troupe" on Sunday, January 23, 2005, at 2:00p.m. This improv troupe will create scenes based on audience suggestions and perform hilarious sketches featuring lots of celebrity impersonations. Also on the schedule are:

-- "Feng Shui: Clearing Clutter and Getting Organized with Teresa Polanco" on Thursday, February 17, 2005, at 7:30p.m.

-- "Culinary Tour of Italy with Olive Oil Tasting" on Thursday, March 10, 2005, at 7:00p.m.

-- "An Evening with Bill Ervolino" on Thursday, April 7, 2005, at 7:00p.m.

Unless otherwise specified, all programs are held in the Council Chambers on the second floor of the Municipal Complex.

For additional information on Montvale Library services and activities, please telephone us at 201-391-5090 or check our web site at [www.bccls.org/montvale](http://www.bccls.org/montvale).

Happy Holidays to all!

Susan Ruttenber, Library Director

**INSTRUCTIONS:**

1. Local Ordinance requires that all dogs/cats 7 months or older must be licensed:  
 Exceptions:
  - a) Newly acquired dogs/cats must be licensed within ten (10) days of acquisition.
  - b) Dogs/cats must be licensed within ten (10) days of reaching licensing age.
2. All dog/cat licenses expire on January 31 of each year.
3. Owners of dogs/cats previously licensed in Montvale will not be charged the \$5.00 late fee if license applications are received before Feb. 28.
4. Check rabies information and neuter status. If there have been any changes since last registration or if registration is for a new dog/cat, be sure to enclose required veterinarian certificates which will be returned. See license fee table.
5. There is no fee for licensing Seeing Eye or Hearing Ear Dogs.
6. Dogs are not permitted to run at large. Owners may be subject to fine.
7. License form and tag will be issued/mailed upon receipt of payment.
8. **COMPLETE AND RETURN ALL COPIES** of this application with check payable to: **Borough of Montvale**

12 Mercedes Drive  
 Montvale, N.J. 07645  
 (201) 391-5700



**IF DOG/CAT IS DECEASED OR NO LONGER OWNED  
 CHECK BOX & RETURN FORM**

BOROUGH OF MONTVALE  
**NEWSLETTER**

U.S. POSTAGE  
 Bulk Rate  
**PAID**  
 Montvale, N.J.  
 Permit No. 12

Published by the Montvale Borough Mayor & Council      December 2004

**Mayor George B. Zeller**

**COUNCIL**

Michael Evans  
 Roger Fyfe  
 Arthur E. Lavis

Tracy Miceli  
 Clinton B. Miller  
 Richard R. Voorhees

**POSTAL CUSTOMER LOCAL  
 MONTVALE, NEW JERSEY 07645-2199**