

July 7, 2020

Montvale Planning Board
12 Mercedes Drive
Montvale, NJ 07645

RE: Way Point Block 1002 Lot 7

Thank you for the opportunity for Tri-Boro Volunteer Ambulance Corps to review the site plans for Way Point Block 1002 Lot 2. After careful review, we have the following comments, questions or concerns –

- 1.) The plan list a 13'-6" minimum clear height porte cochere, the ambulance with our antennas would need a 14'-5" clearance. We would also require enough turning radius to make a left turn from the driveway to go beneath the canopy.
- 2.) T.B.V.A.C. would need access to the building, garage and all common areas.
- 3.) We would need a three foot clear radius walking path to common areas.
- 4.) All three elevator lengths should be at least 7.5ft, to accommodate our stretchers in a reclined position.
- 5.) Our concern is only one road access in and out without access all the way around the building.
- 6.) Will A.E.D.s be on site (Common areas, elevators, pool & gym)?

Respectfully,

Heather McGee
President
Tri-Boro Volunteer Ambulance Corps

To: Montvale Planning Board

From: MFD Plan Review Committee

Date: 7/06/20

**RE: Block 1002 Lot 7
Summit Avenue**

The plans dated 6/26/20 were reviewed by the Montvale Fire Department plan review committee and have the following comments and concerns.

- Fire access to the building is better than the previous revision, but the fire department would still prefer access completely around structure. The fire lane must be maintained 24/7 including full snow plowing and no parking allowed. The Fire lane must be marked with no parking fire lane. As shown, a fire truck or any large truck pulling in to the east side of the building, would have to back out all the way to Summit Avenue. We are also unsure if Engine M-1 and Tower Ladder M-5 would be able to make the left turn to access the south and west side of the building. Enclosed is copy of turning performance for M-5.

- A Suez water main gridded to Greenway with hydrants locate per marked up drawing C-04 with a 2500 GPM fire flow. Three new hydrants are to be located around the building (one by the front door, one on the southwest corner and one on the north west corner). The Fire Department is opposed to having a private water system on site, as the meters and backflow preventers associated with this type of system all add to the restrictions within the system, as well as adding complexity and maintenance issues.

If no other option than the hot box,

- an additional new hydrant is to be installed before the hot box

- Yard hydrants are to be installed on a separate 8" water main from the fire Service so that using a yard hydrant will not affect the fire suppression system. A fire flow of 2500 GPM is still required from the yard hydrants.

- The fire department is requesting a copy of any flow tests that were performed by Suez.
- Knox Box installed (location to be determined by the fire department)
- Separate standpipe 5" Stortz connections for garage and structure and both to be located near the hydrant by front door.
- Remove access island at Summit Ave or make a mountable curb
- Clarification of driveway elevation change (fire apparatus angle of attack and departure)
- The bridges on the walking trail should be wide enough and be able to handle the weight of a fully loaded Polaris 1000 UTV.(3500 LBs)

Reviewed by: TA, MB, RH, GG



MONTIVALE

Turning Performance Analysis

Chassis: Arrow XT Chassis, PAP/Midmount

Body: Aerial, Platform 100', Alum Body

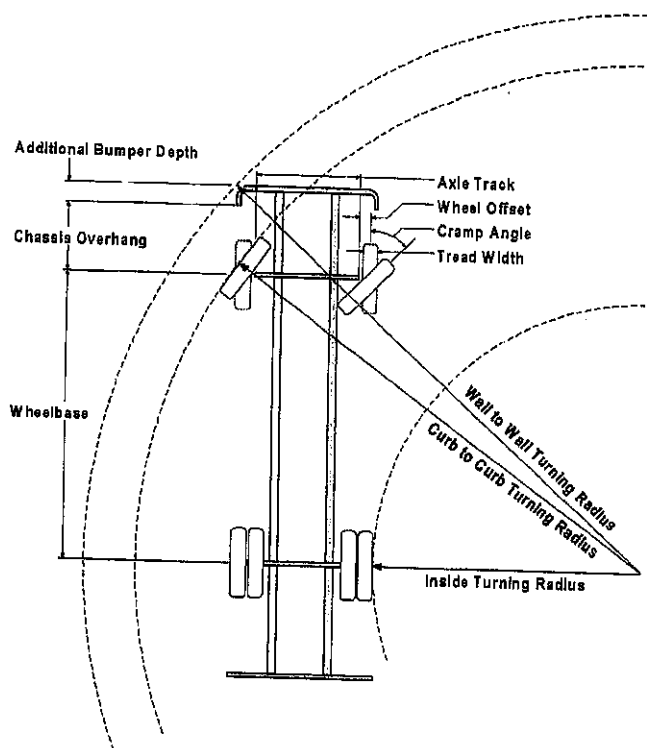
Parameters:

Inside Cramp Angle:	45°
Axle Track:	81.92 in.
Wheel Offset:	4.68 in.
Tread Width:	16.3 in.
Chassis Overhang:	68.99 in.
Additional Bumper Depth:	19 in.
Front Overhang:	137.6 in.
Wheelbase:	266 in.

Calculated Turning Radii:

Inside Turn:	21 ft. 1 in.
Curb to curb:	37 ft. 7 in.
Wall to wall:	45 ft. 1 in.

Comments:



Category	Option	Description
Axle, Front, Custom	0648752	Axle, Front, Dana, D2200, 22,800 lb
Wheels, Front	0019611	Wheels, Front, Alcoa, 22.50" x 12.25", Aluminum, Hub Pilot
Tires, Front	0594821	Tires, Front, Goodyear, G296 MSA, 425/65R22.50, 20 ply
Bumpers	0606443	Bumper, 19" Extended, Steel Painted, Arrow XT
Aerial Devices	0657391	Aerial, 100' Pierce Platform, 35 MPH Wind Rating, 400lb Tip Load Allowance

Notes:

Actual Inside cramp angle may be less due to highly specialized options.

Curb to Curb turning radius calculated for 9.00 inch curb.

Definitions:

Inside Cramp Angle	Maximum turning angle of the front inside fire.
Axle Track	King-pin to King-pin distance of front axle.
Wheel Offset	Offset from the center line of the wheel to the King-pin.
Tread Width	Width of the tire tread.
Chassis Overhang	Distance of the center line of the front axle to the front edge of the cab. This does not include the bumper depth.
Additional Bumper Wheel	Depth that the bumper assembly adds to the front overhang.
Wheelbase	Distance between the center lines of the vehicles front and rear axles.
Inside Turning Radius	Radius of the smallest circle around which the vehicle can turn.
Curb to Curb Turning Radius	Radius of the smallest circle around which the vehicle's tires can turn. This measures assumes a curb height of 9 inches.
Wall to Wall Turning Radius	Radius of the smallest circle around which the vehicle's tires can turn. This measures takes into account any front overhang due to chassis , bumper extensions and or aerial devices.

61

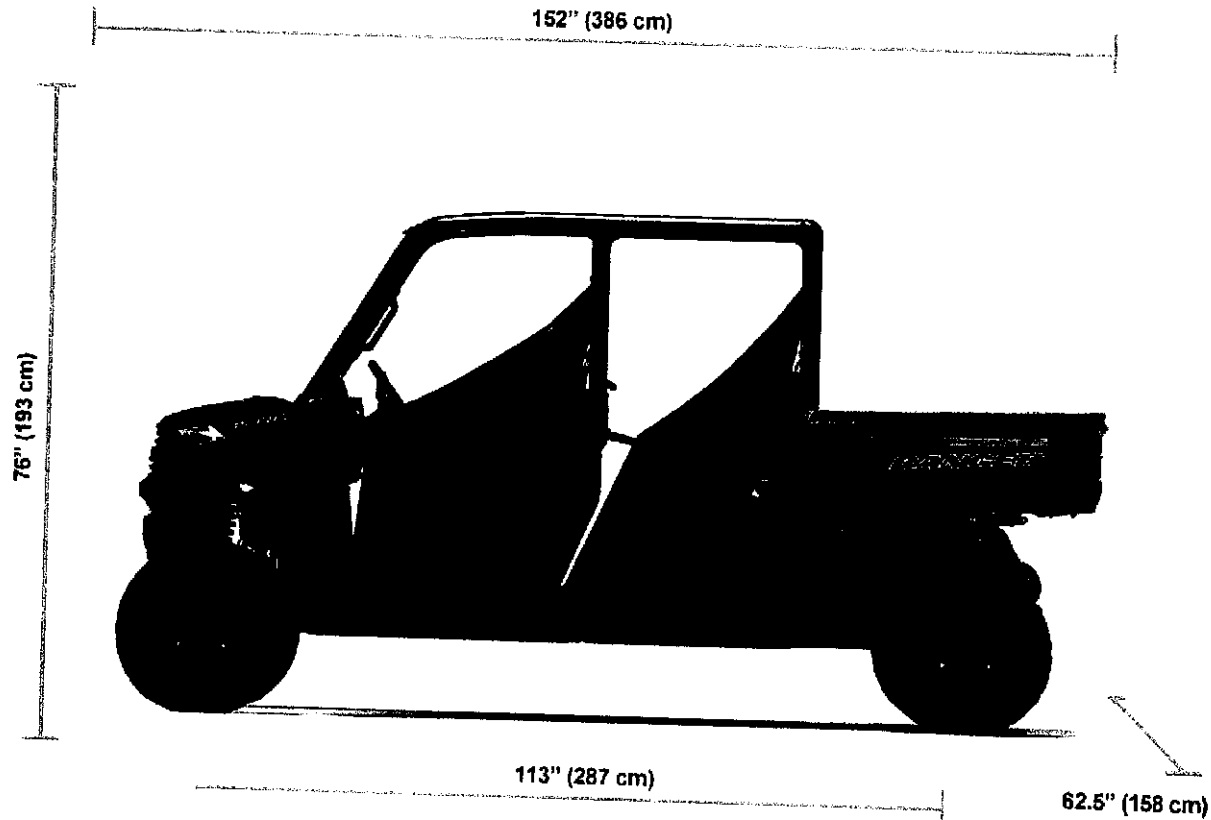
Horsepower

6

Person Capacity

12"

Ground Clearance



Engine & Drivetrain

Cooling	Liquid
Cylinders Displacement	999cc
Drive System Type	High Performance On-Demand True AWD/2WD/VersaTrac Turf Mode
Engine Type	4-Stroke SOHC Twin Cylinder
Fuel System/Battery	Electronic Fuel Injection